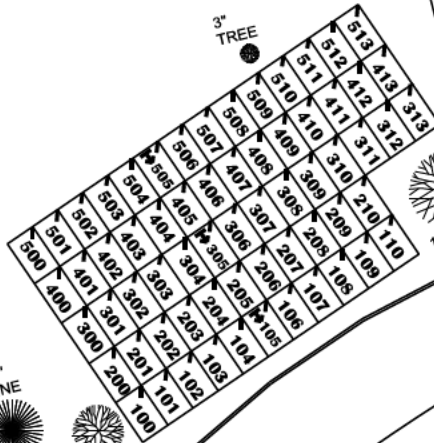
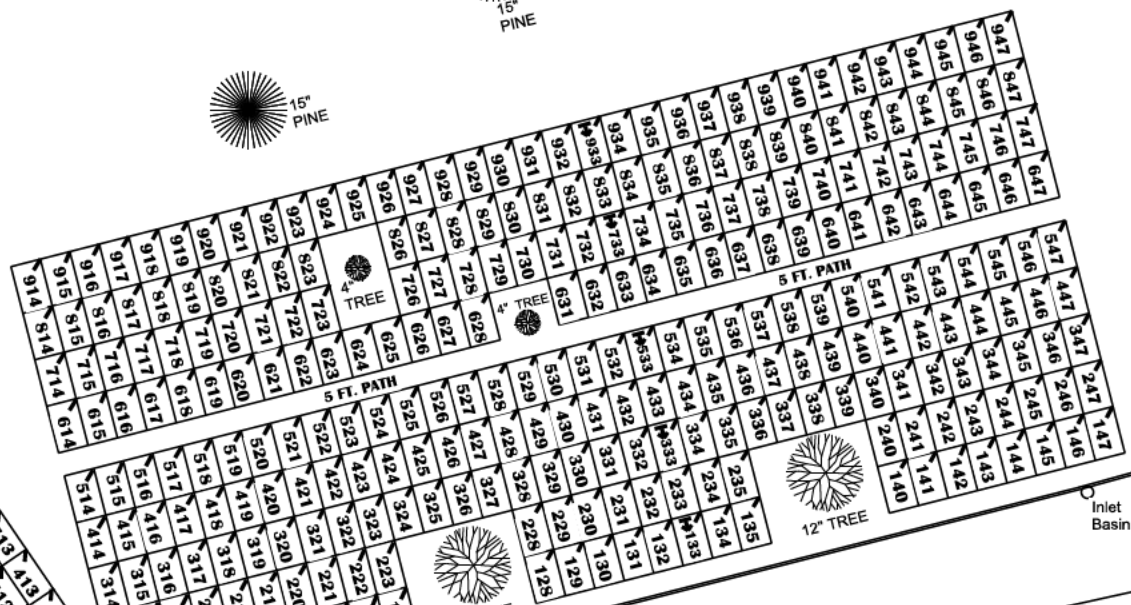




MAIN OFFICE



Pond Area

CEMETERY ROADWAY

Grass Median

Inlet Basin

Inlet Basin

Inlet Basin

Landscape Island

Inlet Basin

GRAVE MARKER LOCATIONS SHOWN THUS:
ARROW INDICATES DIRECTION GRAVE MARKERS WILL FACE

ALL LOTS ARE TWO GRAVE LOTS (6'-4" x 10'-0")

THE LOT NUMBER MARKER IS FOUND AT THE UPPER RIGHT HAND CORNER OF THE LOT AS YOU FACE THE LOT FROM THE ROADWAY AND IS INDICATED THUS:

ALL SAINTS CEMETERY

Northfield, Ohio

SECTION 2

Scale: 1" = 40'

October, 2020

John J. Bischof